



# MONTHLY MEMBERSHIP PROGRESS REPORT

District 5 NW

Results as of: 04/30/2019

GMT: OPEN

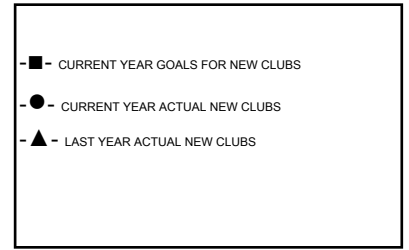
LOCATION NORTH DAKOTA

GMT CA

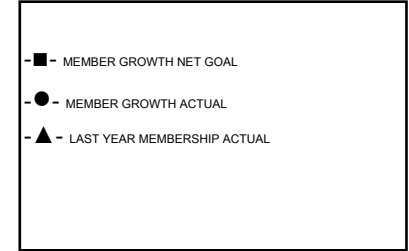
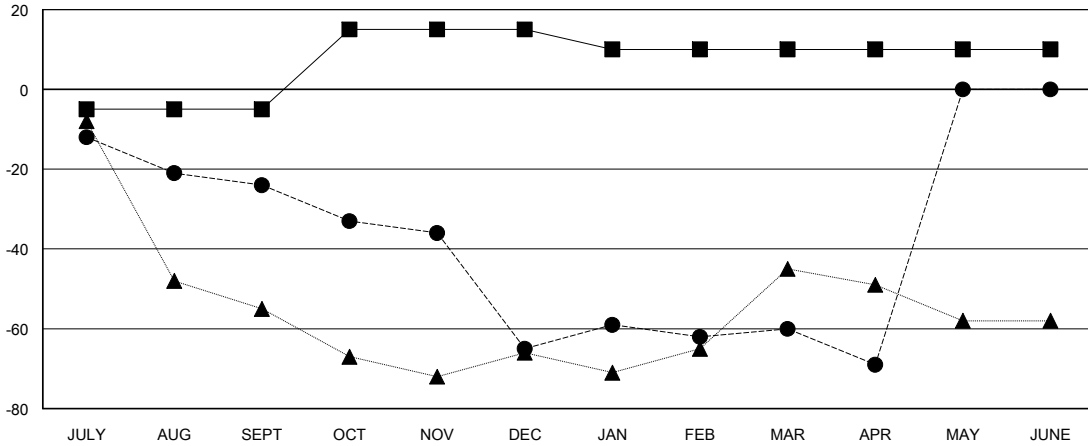
Clubs			
RESULTS FOR 2018-2019			
QUARTER	NEW CLUB GOAL	NEW CLUBS	DROPPED CLUBS
JULY/AUG/SEPT	0	0	0
OCT/NOV/DEC	1	0	0
JAN/FEB/MAR	0	0	0
APR/MAY/JUNE	0	0	0

Members			
RESULTS FOR 2018-2019			
QUARTER	MEMBER GROWTH NET GOAL	MEMBER GROWTH ACTUAL	DROPPED MEMBERS ACTUAL (including transfers)
JULY/AUG/SEPT	-5	6	30
OCT/NOV/DEC	20	20	59
JAN/FEB/MAR	-5	36	27
APR/MAY/JUNE	0	4	13

GOALS AND ACTUAL NEW CLUBS CUMULATIVE



GOALS AND ACTUAL MEMBERS CUMULATIVE



DROPPED CLUBS: 0	28 CLUBS OF 45 ADDED 1 OR MORE NEW MEMBERS	<u>GENDER DISTRIBUTION</u> MALE 732 (63.16%) FEMALE 427 (36.84%) Women Percentage Fiscal Year Goal: 50%
<u>DROPPED MEMBERS</u> DECEASED 11 CLUB CANCELLED 0 OTHER 118 TOTAL 129	<a href="#">CLICK HERE FOR CUMULATIVE MEMBERSHIP DATA</a>	TOTAL FAMILY UNIT MEMBERS 203 FAMILY MEMBERS PAYING HALF DUES 103